


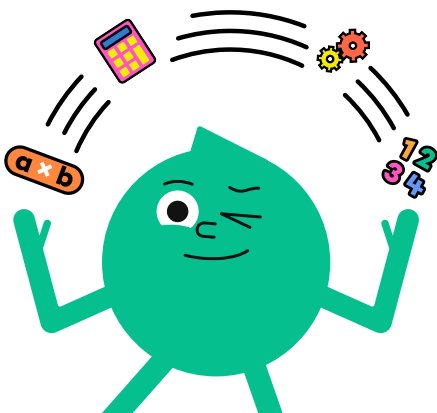
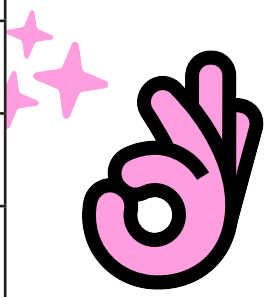
# Multiplication tables

## 1 to 10

The following chart is called the Table of Pythagoras. You can use it to review your multiplication tables from 1 to 10. To find the result of a multiplication, place your finger on the tile where the horizontal row and vertical column intersect.



| X  | 1  | 2  | 3  | 4  | 5  | 6  | 7  | 8  | 9  | 10  |
|----|----|----|----|----|----|----|----|----|----|-----|
| 1  | 1  | 2  | 3  | 4  | 5  | 6  | 7  | 8  | 9  | 10  |
| 2  | 2  | 4  | 6  | 8  | 10 | 12 | 14 | 16 | 18 | 20  |
| 3  | 3  | 6  | 9  | 12 | 15 | 18 | 21 | 24 | 27 | 30  |
| 4  | 4  | 8  | 12 | 16 | 20 | 24 | 28 | 32 | 36 | 40  |
| 5  | 5  | 10 | 15 | 20 | 25 | 30 | 35 | 40 | 45 | 50  |
| 6  | 6  | 12 | 18 | 24 | 30 | 36 | 42 | 48 | 54 | 60  |
| 7  | 7  | 14 | 21 | 28 | 35 | 42 | 49 | 56 | 63 | 70  |
| 8  | 8  | 16 | 24 | 32 | 40 | 48 | 56 | 64 | 72 | 80  |
| 9  | 9  | 18 | 27 | 36 | 45 | 54 | 63 | 72 | 81 | 90  |
| 10 | 10 | 20 | 30 | 40 | 50 | 60 | 70 | 80 | 90 | 100 |



# Multiplication tables

## 1 to 10

To practise, fill in this chart with your multiplication tables.

| X  | 1 | 2 | 3 | 4 | 5 | 6 | 7 | 8 | 9 | 10 |
|----|---|---|---|---|---|---|---|---|---|----|
| 1  |   |   |   |   |   |   |   |   |   |    |
| 2  |   |   |   |   |   |   |   |   |   |    |
| 3  |   |   |   |   |   |   |   |   |   |    |
| 4  |   |   |   |   |   |   |   |   |   |    |
| 5  |   |   |   |   |   |   |   |   |   |    |
| 6  |   |   |   |   |   |   |   |   |   |    |
| 7  |   |   |   |   |   |   |   |   |   |    |
| 8  |   |   |   |   |   |   |   |   |   |    |
| 9  |   |   |   |   |   |   |   |   |   |    |
| 10 |   |   |   |   |   |   |   |   |   |    |