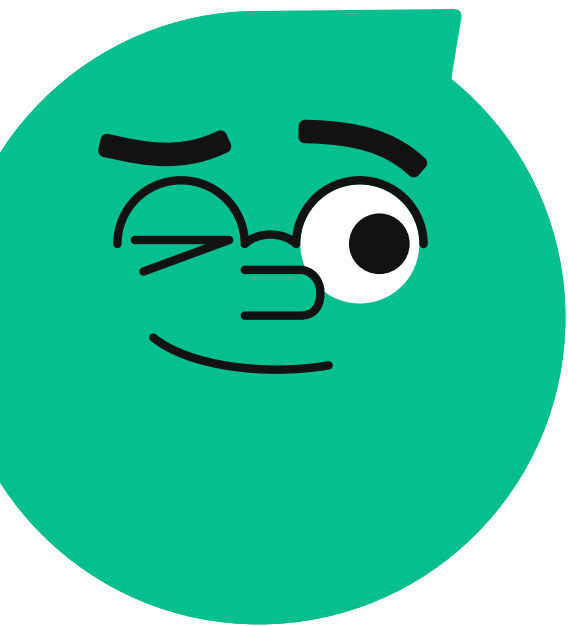
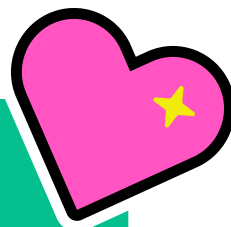


Guide to Using Alloprof with Vulnerable Student Populations



alloprof
teachers

x

Université 
de Montréal

Alloprof is a valuable tool for supporting the learning of students with learning difficulties. However, to maximize its impact, its resources must be adapted for use in classrooms with vulnerable students.

As part of a collaboration between Alloprof and researchers Mélanie Paré and Sophie Dominé from Université de Montréal, a study was conducted to test and analyze practices involving Alloprof resources with students experiencing academic difficulties. This study involved three meetings with teachers and a resource teacher working in a variety of educational settings, including regular elementary classes, specialized classes, and general adult education classes in disadvantaged, multilingual, and penitentiary environments

The objectives for each meeting were as follows:

- 1- Identify the students' needs and challenges, along with the Alloprof tools utilized in the classroom.
- 2- Analyze classroom experiments, exchange ideas on possible improvements, and discuss winning practices.
- 3- Assess the impact on students.

This guide offers practical strategies for teachers to use Alloprof effectively in high-need educational contexts.



Identifying Students' Needs

Students from vulnerable backgrounds face a number of challenges that can limit their engagement in school:

Need for belonging: These students often have an irregular school career marked by breaks and transitions (changes of program, school, teacher, or country). They may feel socially isolated and need to build meaningful relationships with their peers and teachers.

Need for competence: Over time, compounded learning difficulties can lead to a feeling of powerlessness in educational settings, resulting in avoidance, low self-esteem, and a fear of failure. Some students develop a resistance to academic effort and need interesting, accessible tasks in order to learn.

Need for autonomy: Many students are reluctant to take initiative or persevere in learning activities or when they face obstacles. They may develop a dependence on teacher assistance or specialized resources. These students need to be trusted and given choice over the tools and strategies that facilitate their learning and motivation.

To properly address these needs, it's essential to provide a compassionate, structured, and stimulating learning environment. Teachers and support staff must have access to strategies and resources tailored to their students' diverse needs.

Integrating Alloprof's Resources in the Classroom

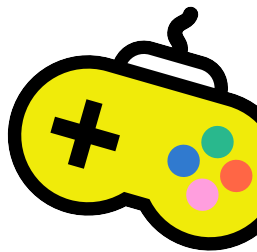
The study identified several effective ways teachers have used Alloprof. These uses fall into four categories: planning, learning support, addressing students' needs, and school-family collaboration.

Planning

- Preparing lesson plans with the [Alloprof Teachers](#) section, which includes blog posts and printable resources
- Refreshing teachers' subject knowledge
- Incorporating resources into classroom activities (workshops or differentiated activities) such as:

Games

- [Speedy Rabbit](#) (arithmetic, Grades 1 to 6)
- [Magimot](#) (French spelling, Grades 2 to 6)
- [MétéorMath 2](#) (arithmetic, Grade 2 to Secondary II)
- [Book of Spells](#) (reading, Grade 3 to Secondary II)
- [Potager en péril](#) (French parts of speech, Grade 4 to Secondary II)
- [La foire](#) (geometry, Grade 5 to Secondary II)
- [PP L'archer](#) (French past participle agreements, Grade 5 to Secondary V)





- [Solitary reaction](#) (chemical equations, Secondary IV and V)

Videos

- [Crash Courses](#) (15- to 30-minute videos + interactive exercises)
- [Live Reviews](#) (longer videos for Ministry exams)

Learning Support

- Producing content summaries for students
- Reviewing current- and prior-year concepts using :
 - [Concept sheets](#) filtered by subject and grade level
 - [Crash Courses](#)
- Helping students catch up after an absence, particularly in the event of a suspension or withdrawal from school
- Adapting [exercises](#) (quantity or complexity) to review concepts in a different way or dive deeper into a specific topic

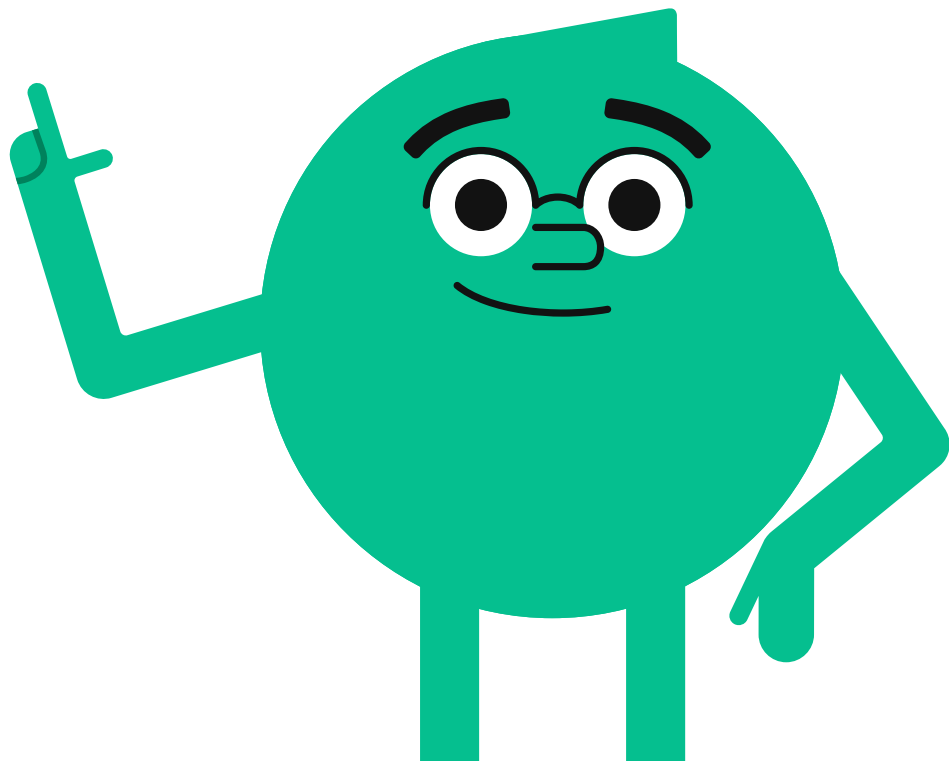
Student Needs

- Using Alloprof webinars to introduce students to the website (French Only):
 - [Webinar #10 \(Exam Prep and Study Tips section\)](#)
 - [Webinar #11 \(asking a question and the Help Zone\)](#)
 - [Webinar #12 \(searching the website\)](#)
- Modelling navigation of the Alloprof site, including the search function and use of the audio player
- Using Alloprof for homework help or before asking the teacher for help in class
- Supporting students in transitioning from elementary to high school by integrating Alloprof into their routine
- Normalizing Alloprof as a resource for all students and subjects. Envoi d'hyperliens vers les ressources d'Alloprof.
- Using [educational videos](#) on all subjects and on study tips



School-Family Collaboration

- Using Alloprof to support discussions with students and parents on topics such as:
 - [Homework assistance](#)
 - [Exam preparation](#)
 - [Difficulties at school](#)
 - [Encouraging reading and writing](#)
 - [Healthy life habits and educational activities](#)
 - [School levels in Quebec](#)
 - [Report cards and school system](#)
- Transitioning from multilingual students using Alloprof on their own to non-Francophone parents using Alloprof
- Parents using direct services
 - [Live chat](#)
 - [Parents chat](#) (for topics other than school subjects)
 - Phone calls (1-888-776-4455) and [subject-specific text support](#)
 - [Help Zone](#)



Characteristics of an Effective Educational Resource

The discussions with the participants allowed us to identify several characteristics that can be used to measure the effectiveness of a support resource for special needs and multilingual students.



Text-to-speech voice is pleasant to listen to

Just the right length: not too long and not too short

Captures the student's attention

Cultural references are relevant to all students

Adapts to student's level

Simple, easy to understand

Easy to find answers

Interactive and fun

Allows the student to do the exercise on their own

Strategies for Integrating Alloprof Resources into the Classroom

Using Alloprof in settings with vulnerable students requires a carefully considered approach tailored to the specific needs of the students. There are a few strategies that should be prioritized when using Alloprof resources in the classroom:

- **Teacher training:** The participants felt that the presentation of Alloprof resources and the discussions during the meetings enabled them to take full advantage of the platform and to familiarize themselves with new resources. They also noted that any professional development or training (including independent learning) should be recognized by their employer just like traditional professional development classes.
- **Modelling the use of this resource for students:** An in-class demonstration of the various resources offered by Alloprof, and encouragement to use the search tool, are good starting points to make it easier for students to use the platform. By starting the year with this type of modelling, it is possible to help students and their parents get and stay in the habit of using this resource.

- **Developing checklists and support procedures:** Procedures and checklists can help students become more autonomous. These documents enable students to find solutions on their own when they encounter a problem, rather than depending on the teacher. The autonomy acquired in the classroom may then transfer to the home, as students develop appropriate strategies for overcoming difficulties on their own.

Alloprof: A Springboard to Success

Alloprof is a Quebec-based tool that integrates local cultural references and offers a dynamic, interactive platform. Its features, such as auto-correction and real-time feedback, are particularly appreciated by teachers and students alike.

Educators working in high-need settings have demonstrated that with targeted interventions—such as structured resource presentations and teacher training—students can develop greater autonomy in their learning. By integrating Alloprof into their daily routines from the start of the school year, teachers can help students build confidence, improve engagement, and achieve academic success.

