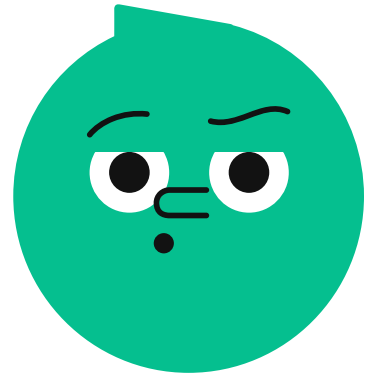


Learning and Evaluation Situation

English as a Second Language

Secondary II



The Curious Cryptid Case



Student Booklet



Your Task

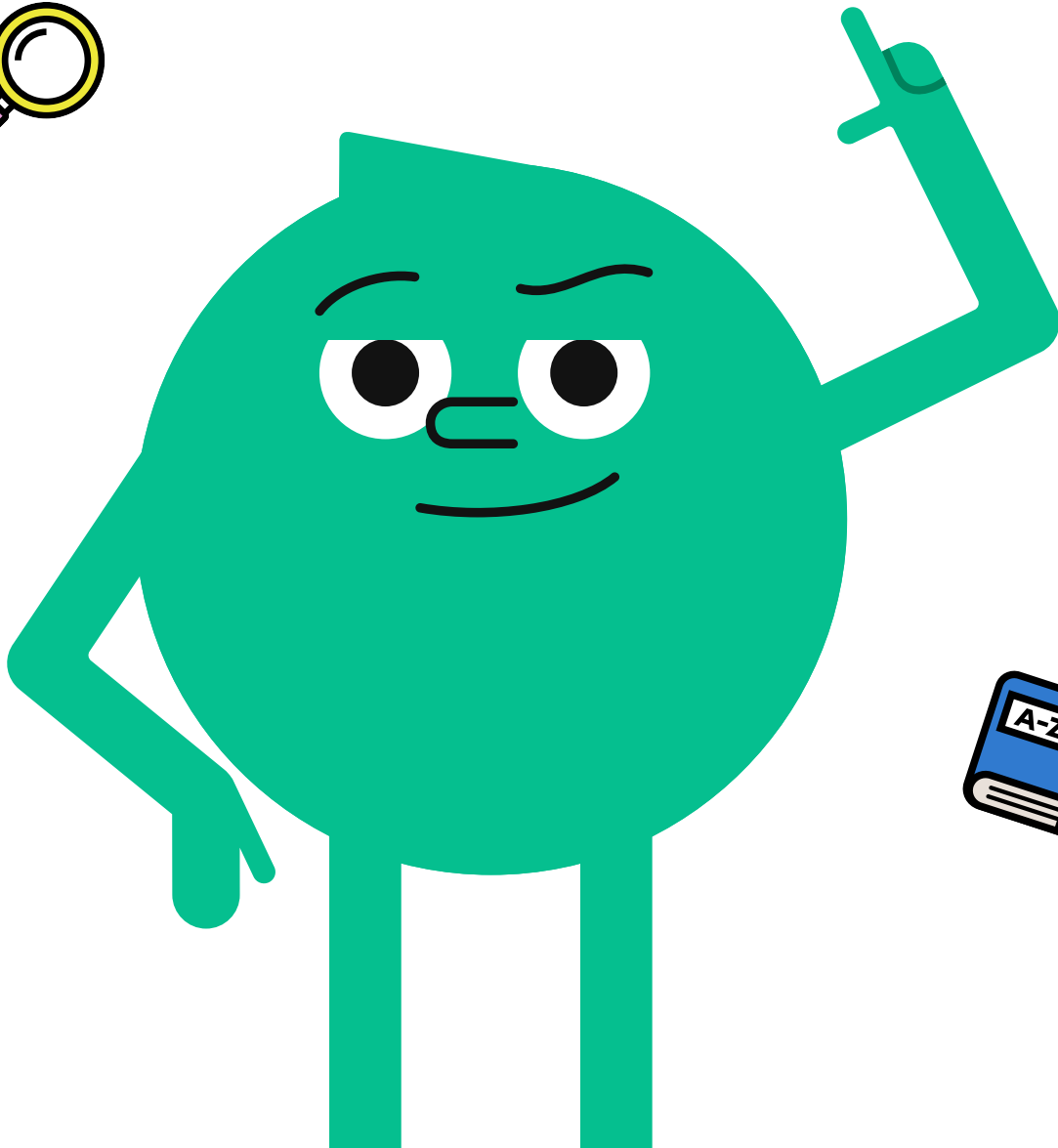
In this activity, you will alternately assume the role of an eyewitness and an investigator.

As the eyewitness	As the investigator
<ul style="list-style-type: none"> > Provide information on a cryptid sighting > Answer the investigator's questions 	<ul style="list-style-type: none"> > Ask questions about the cryptid sighting > Gather information > Share information with the podcast team

Some preparation is required before playing each roles. This will be done in part 2 of the activity.

Cryptid Definition

A creature that is found in stories and that some believe exists or say they have seen, but that has never been proven to exist. (Cambridge Dictionary)



Podcast Transcript

Welcome back, curious minds, to *Melvin's Mysterious Mysteries*, the podcast that explores the **unexplained** phenomena!

I'm your host, Melvin, and today, we're diving into the intriguing world of **cryptids**. What's a cryptid, you ask? Oh, you're in for a fascinating ride!



Imagine creatures that are hidden, **elusive**, and often the stuff of legends. Cryptids are creatures that some people believe exist, but for which there is no **definitive** scientific proof. They may not be officially recognized by scientists, but they capture our imagination **nonetheless**.

You might be familiar with some famous cryptids. Sasquatch, for instance, also known as Bigfoot, is a large, hairy creature said to roam the forests of North America. Or perhaps you've heard of the Loch Ness Monster, a sea creature thought to live in the deep waters of Scotland's **Loch Ness**?

These stories have been passed down through the years, surrounded by **folklore**, **eyewitness** accounts, and sometimes even **blurry** photos or videos. There are tons of other cryptids around the world, each with its own unique story and description.

Whether you're a believer or a skeptic, cryptids challenge us to **think outside the box** and **ignite** our sense of adventure. After all, who doesn't love a good mystery?

Thank you for joining us, and make sure to tune in as we explore the strange world of cryptids in our new podcast series: *Mysterious Mysteries of Cryptids: "To Believe, or Not to Believe"*.

Goodbye for now, and until next time, remember: Dare to be curious!



unexplained: not explained, mysterious

cryptid: creature not proven to exist

elusive: difficult to catch or find

definitive: conclusive, reliable

nonetheless: although, anyway

Loch Ness: large lake in Scotland

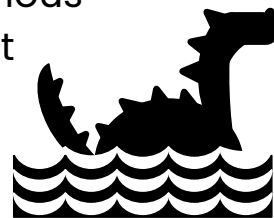
folklore: tradition, legend, superstition

eyewitness: observer, spectator

blurry: fuzzy, unclear

think outside the box: think differently, originally

ignite: start up, excite



Cryptid Files 1

Sasquatch

[SA-skwa-tch]

Also known as: Bigfoot

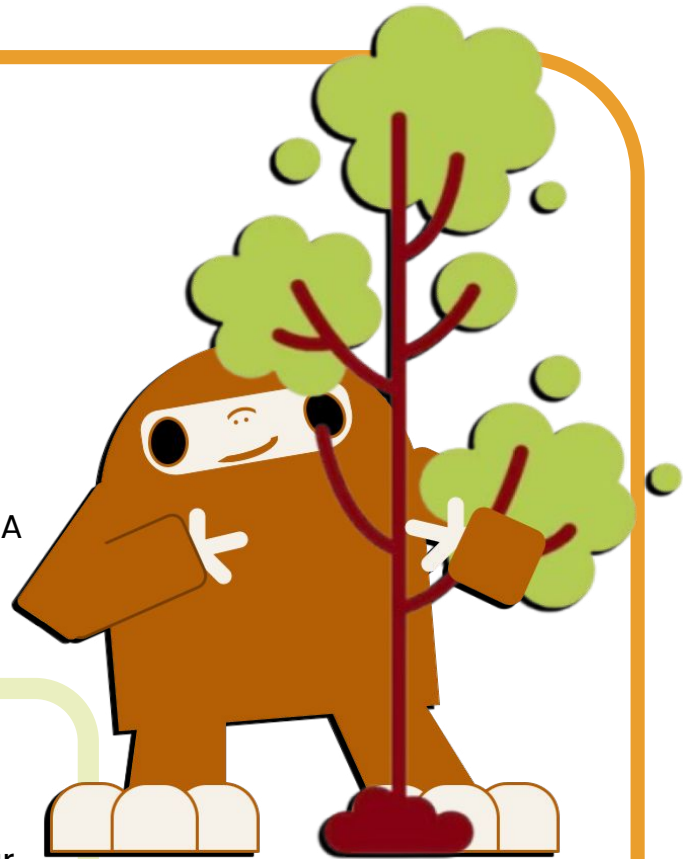
Size: 6-15 feet / 1.8-4.6 metres

Habitat: Forest

Sightings: Northwestern Canada and USA

Characterizing features

- Human-like → particularly the face
- Muscular → large and powerful-looking
- Hairy → thick brown, black, or reddish fur
- Large feet → origin of the name *Bigfoot*
- Bipedal → walks on 2 feet
- Shy & elusive → avoids human contact



Similarities to other animals

Bears

- Same fur type and colours
- Can walk on 2 legs
- Large and muscular shape
- Found in forests



Apes

- Closest human relative
- Large and muscular shape
- Can walk on 2 legs
- Same fur colours



Cryptid Files 2

Loch Ness Monster

[Lock-Ness mons-ter]

Also known as: Nessie

Size: 15-20 feet / 4.5-6 metres

Habitat: Fresh water

Sightings: Loch Ness, Scotland

Characterizing features

Long neck → snake-like neck

Long tail → in most sightings

Smooth dark skin → green or black

Aquatic → elegant swimmer

Elusive → avoids human contact



Similarities to other animals

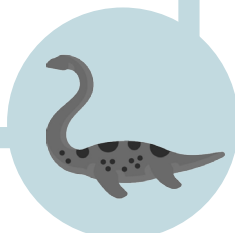
Plesiosaurs

→ Long neck

→ Humped back

→ Aquatic

→ Long tail

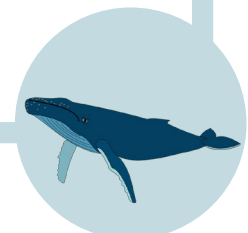


Humpback whales

→ Humped back

→ Smooth skin

→ Aquatic



Cryptid Files 3

Mothman

[Maath-man]



Size: 7-8 feet / 2.1-2.4 metres

Habitat: Rural areas

Sightings: Point Pleasant, West Virginia, USA

Characterizing features

Humanoid figure with wings → described as similar to moths or bats

Wingspan → 10 feet / 3 meters

Large glowing red eyes → sometimes described as hypnotic

Agile, very fast & quiet → when moving & flying

Body covered in fur or feathers → descriptions vary

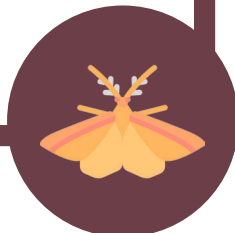
Nocturnal → comes out at night

Superstition → some believe it is a sign of bad things to come

Similarities to other animals

Moths

- Wing shape (*some accounts*)
- Fur-like scales
- Nocturnal



Bats

- Wing shape (*some accounts*)
- Hairy body
- Nocturnal



Cryptid Files 4

Loveland Frogman

[luhv-land fraag-man]

Also known as: Loveland Lizard

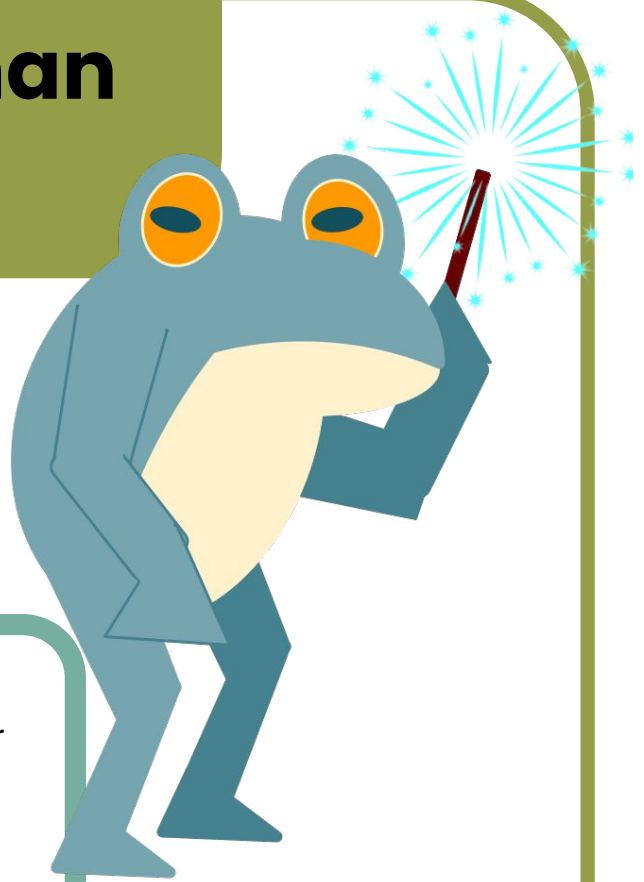
Size: 3-4 feet / 0.9-1.2 metres

Habitat: Rural areas

Sightings: Loveland, Ohio, USA

Characterizing features

- Limbs → webbed hands & feet
- Amphibious → adapted for land and water
- Skin → leathery with spots
- Tools → wand emitting sparks
- Bipedal → walks on 2 feet
- Shy & elusive → avoids human contact



Similarities to other animals

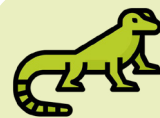
Frogs

- Frog-like head
- Webbed hands & feet
- Skin texture
- Amphibious



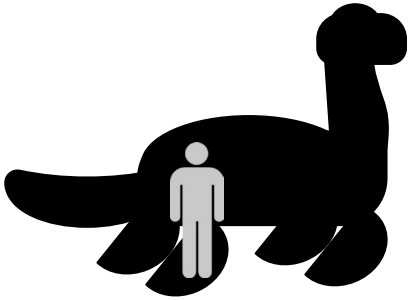
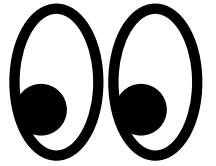
Lizards

- Skin texture
- Tail (*in some descriptions*)
- Some species can run on 2 legs (*dragon lizard, basilisk*)



Additional Cryptid Examples

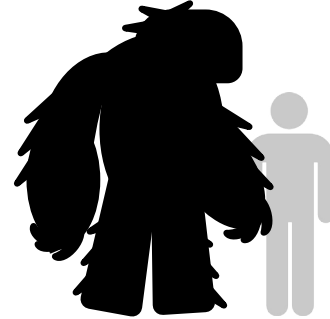
Human silhouette for size reference.



Champy



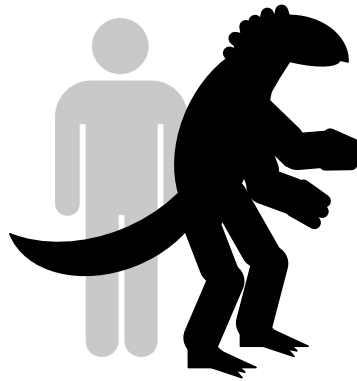
Chupacabra



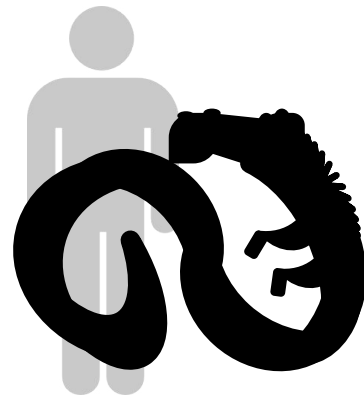
Yeti



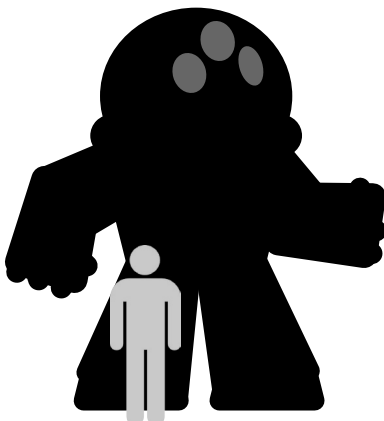
Jersey Devil



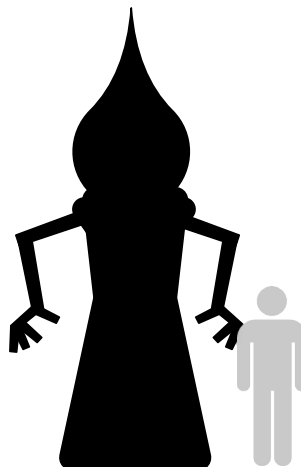
The Lizard Man
of Scape Ore
Swamp



Tatzelwurm



Voronezh
Giant



Flatwoods
monster



Hopkinsville
Goblin

Question Forms Reminder

With the verb **to be**

Yes/No questions

To be + subject + object ?

Was the monster invisible?

Information questions

Question word + to be + subject + object ?

What is Nessie's full name?

With **other verbs**

Yes/No questions

Auxiliary verb + subject + verb + object ?

Did you hear that?

Information questions

Question word + auxiliary verb + subject + verb + object ?

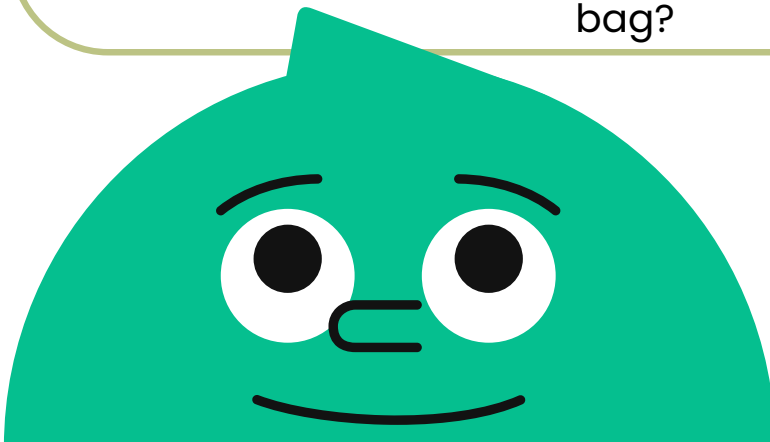
When will we see a cryptid?

Subject questions

When the **question word** is the subject of the verb

Question word + verb + object ?

Who ate my sleeping bag?



Vocabulary List

Body parts

head	tooth/teeth	arm	hoof/hooves	back
eye	fang	hand	paw	belly
nose	tusk	finger	wings	mane
mouth	tongue	claw	tentacle	crest
snout	horn	talon	tail	pouch
trunk	antlers	leg	fin	gills
beak	antennae/antenna	foot/feet	flipper	hump
whisker		toe	neck	

Characteristics

big	tiny	fluffy	ferocious
small	huge	hairy	friendly
large	long	scaly	playful
tall	pointy	smooth	wild
short	agile	scary	impressive
round	strong	aggressive	poisonous

Body type

feathers	shell
fur	spikes
hair	spots
scales	stripes

Movement

walk	glide
run	swim
jump	crawl
hop	slither
fly	burrow

Sounds

bark	purr
buzz	quack
chirp	roar
growl	snort
hiss	splash
howl	squeak

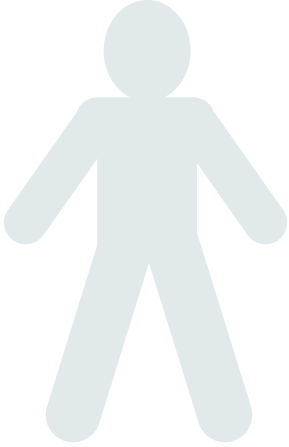
Question words

What
Who
Where
When
Why
How
Whose
Which
How much
How many

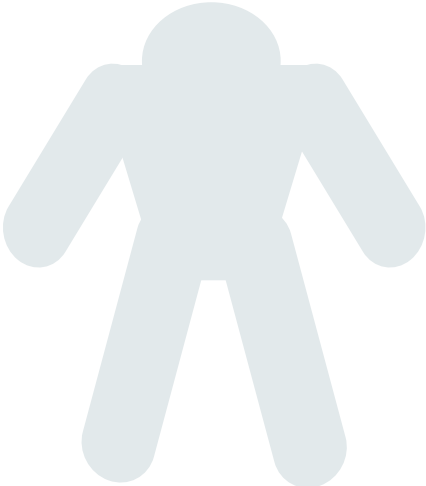
Habitat

cave	jungle	river
desert	lake	tundra
forest	mountain	underground
grassland	swamp	urban

Cryptid Templates: 1 - 2

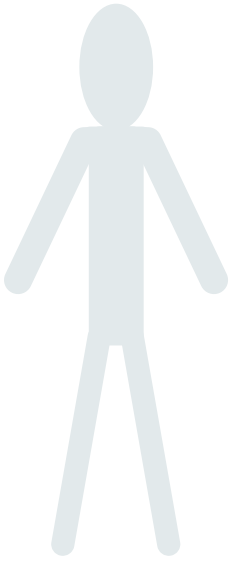


Features & vocabulary




Features & vocabulary

Cryptid Templates: 3 - 4




Features & vocabulary




Features & vocabulary

Cryptid Templates: 5 – 6

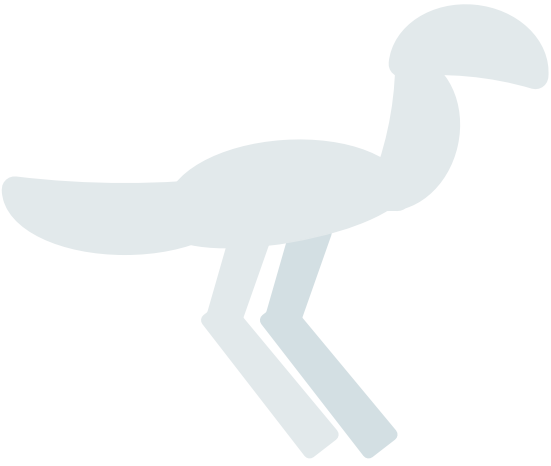


Features & vocabulary




Features & vocabulary

Cryptid Templates: 7 – 8



Features & vocabulary



Features & vocabulary

Cryptid Templates:

Features & vocabulary

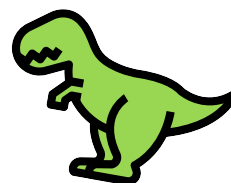
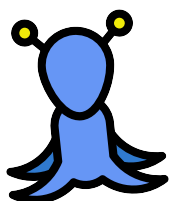
Features & vocabulary

Cryptid Creation Checklist

Include as many of these elements as possible in your creation. The more details you add, the more the creature will seem real.

Cryptid features to include & its appropriate vocabulary

- ☐ Type and number of limbs (arms, legs, tentacles, flippers, wings...)
- ☐ Body textures or type (fur, scales, skin, shell, spikes...)
- ☐ Size or scale (measurement reference or comparison to animal/object/person)
- ☐ General shape (geometric shapes or comparison to animal/object/person)
- ☐ Defining feature(s) that make(s) it recognizable (glowing eyes, large feet, long antennae, horns, antlers, sharp teeth...)
- ☐ Movement (walks, crawls, hops, flies, fast, slow, smooth...)
- ☐ Defence or attack mechanism(s) (claws, movement, teeth, protective shell...)
- ☐ Habitat (forest, lake, grassland, swamp...)
- ☐ Sounds (growls, hisses, splashes...)
- ☐ Any specific abilities (moves faster than we can see, hypnotizing gaze, speaks to / controls other animals, can walk on water...)
- ☐ The creature's behaviour (scary, friendly, curious, nervous, aloof, menacing...)



Interview

Write down the questions you prepared. Make sure to leave some room to note the answers or information you receive after asking each question.

Investigation Questions & Answers

Notes & Extra Activities

Notes & Extra Activities