

English
Secondary 1-2

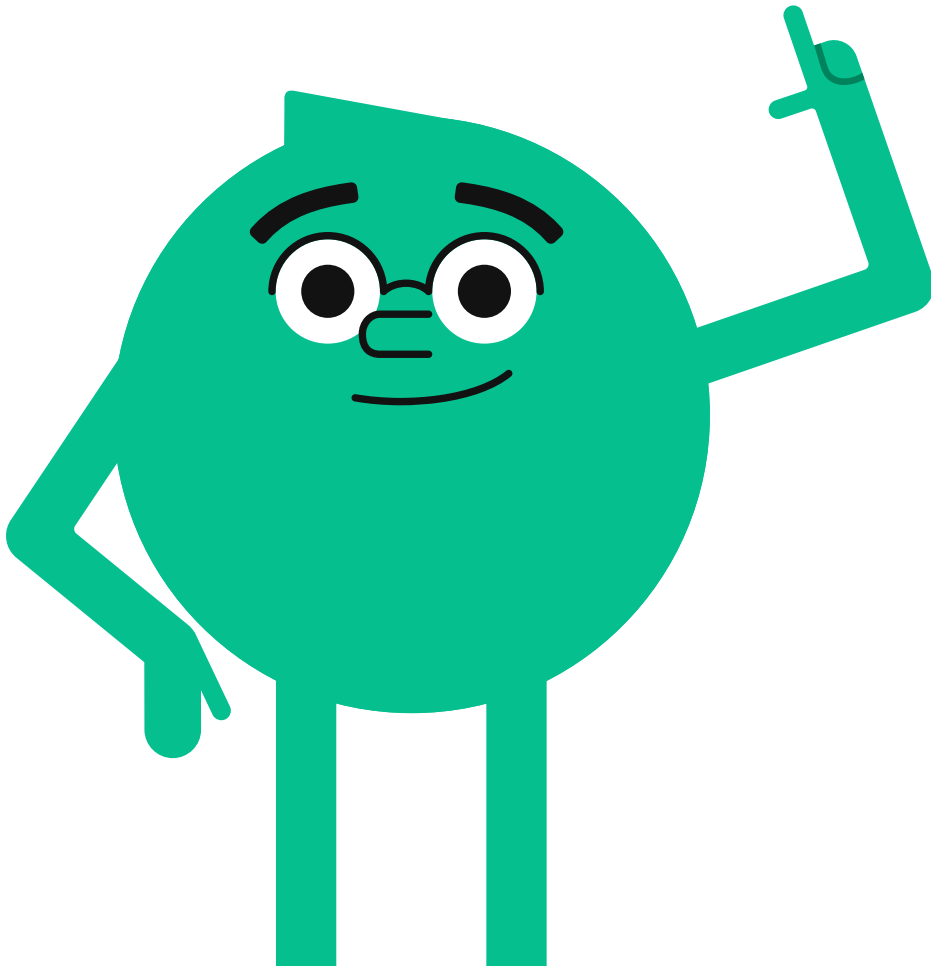
Character Profiles



Teacher Guide

Introduction

In small groups, students create character profiles from texts. Throughout the activity, they'll focus on the psychological traits of the characters, their likes and dislikes, their physical traits, quotes, actions, etc. Guiding questions are provided to help the students fill the character profiles charts, but they can also be modified as necessary to match ongoing class work and literature assignments. This activity can be repeated with any text or media using a blank character profile template.

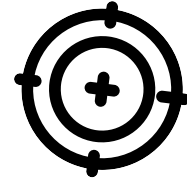


Competency

Reading

Duration

30–45 minutes



Goals

- [Using reading strategies](#)
- Using tools to organize information
 - [Character Profile](#)
 - [Character Comparison](#)
- Understanding [character types and functions](#)
- Develop [character vocabulary](#) from stories



Level

Sec 1–2

Material

- Text [Tales of the Moon Base – Astronaut Bob vs. the Mooncats](#) (Appendix)
- Student Booklet

Task

Read a text and construct character profiles



Other

Repeat the activity with different texts to achieve better results.

In small groups, students create [character profiles](#) from the text [Tales of the Moon Base – Astronaut Bob vs. the Mooncats](#).

It's a short story with only two main characters and a supporting group of characters.

Instructions/Guidelines

- Students read the text **individually**
- Encourage students to annotate the text for
 - New vocabulary
 - Interesting parts
 - Questions/interrogations on any story events, character actions, quotes, inferred meanings
 - What they think is important to the story
- Form small groups of students (2 or 3).
- Students create character profiles for each character.
 - Guiding question examples:
 - What role does this character play in the story?
 - How important is the character to the story?
 - What are some defining actions taken by the character?
 - How does the character change through the story?
 - What other character does this one remind you of? Why?
 - What challenges did the character face?
 - How did the character respond to adversity/conflict or challenges?
 - What adjectives would you use to describe the character's personality?
 - Use the [Character Profile template](#), also available in the Student **Booklet**
- Guiding questions can be modified as necessary to match ongoing class work and literature assignments.
- Activity can be repeated with any text or media text using a blank [character profile template](#).

